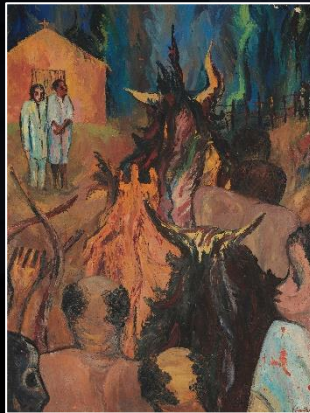


YEMISI SHYLLON
MUSEUM OF ART
PAN-ATLANTIC UNIVERSITY

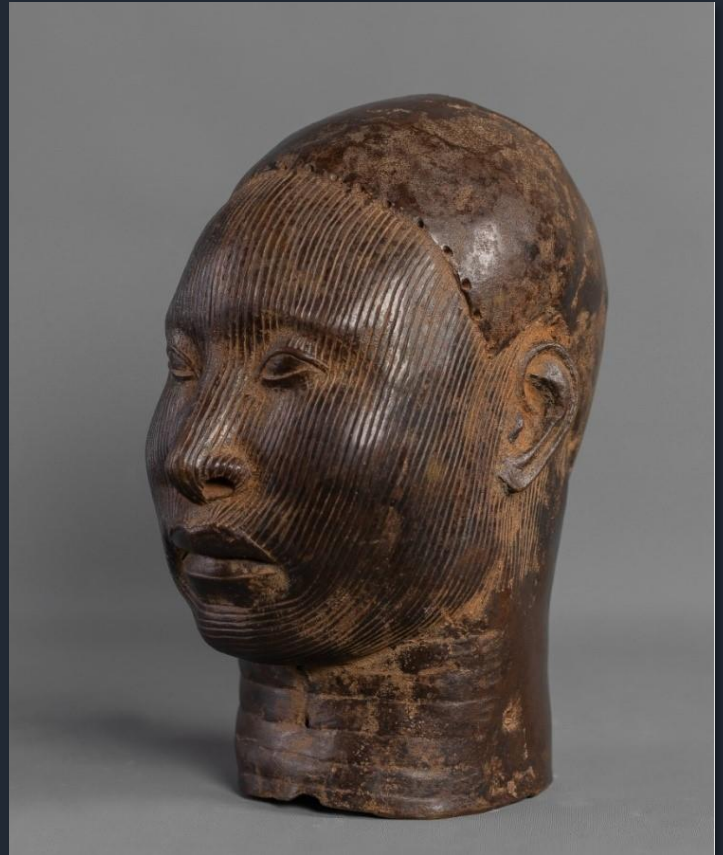


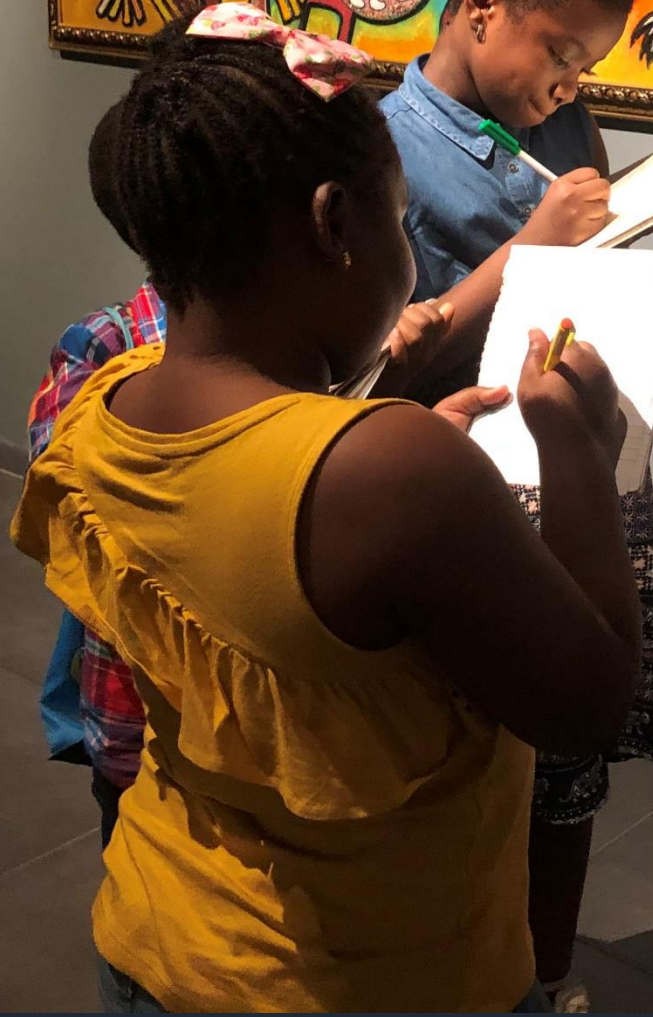
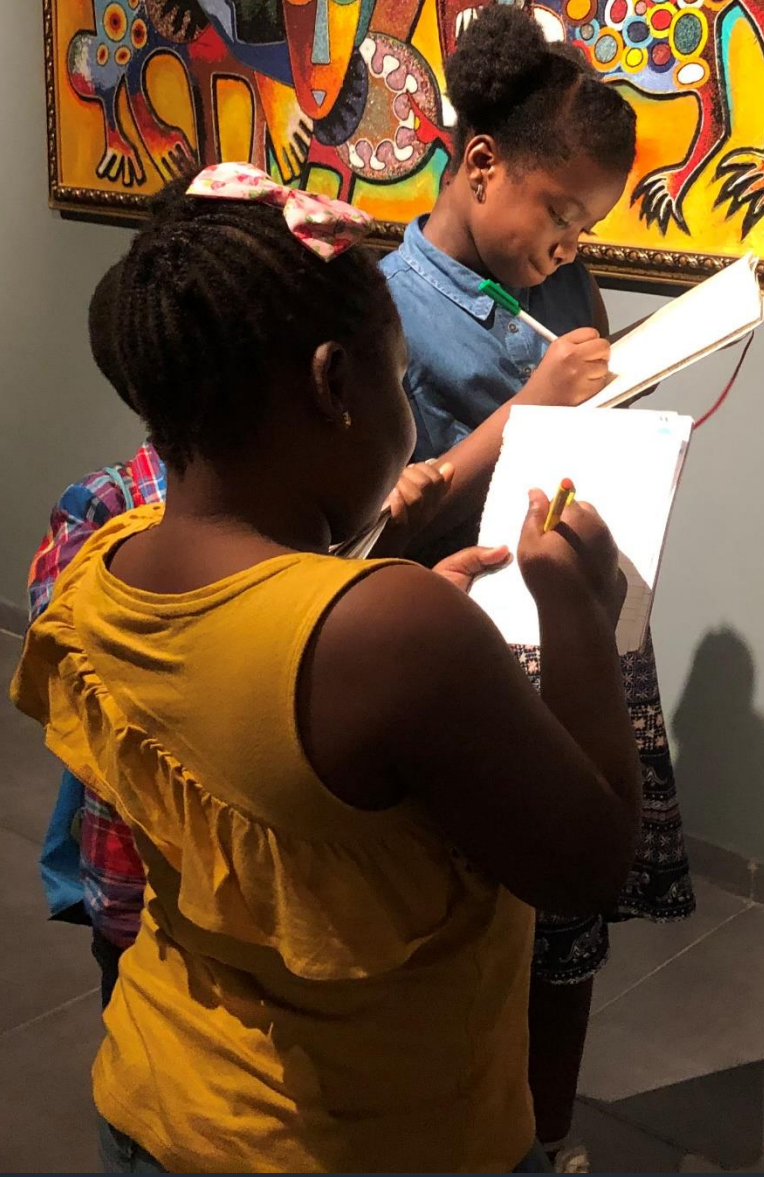
**ANNUAL
REPORT**

2020

CONTENTS

- I. From the Director
- II. Mission Statement
- III. Our People
- IV. YSMA by the numbers
- V. Programmes
- VI. Exhibitions
- VII. Publications
- VIII. Gifts and Loans
- IX. Strategic Plan
- X. Financials
- XI. Membership
- XII. Sponsorships and Support
- XIII. Awards
- XIV. Virtual Tour
- XV. YSMA in the Press





FROM THE DIRECTOR

It has been more than a year since the Yemisi Shyllon Museum of Art, of the Pan-Atlantic University, opened its doors to the university community and to the general public. During this short period of time, we have experienced both exciting and difficult moments.

The onset of the COVID 19 Pandemic put a halt to our physical activities for most of the year. This forced us to rethink our strategies and as a result, we doubled our efforts growing our online presence.

The data, graphs, and charts presented in this report illustrate the YSMA's impact. FY2020's figures demonstrate our resilience and indicates a growing public interest in our activities. As the YSMA enters the year 2021 with a bold four-year strategic plan, the museum hopes to serve as both a connection to our culture and a manifestation of the Pan-Atlantic University's overall educational mission.



Jess CASTELLOTE
Director of the Yemisi Shyllon Museum of Art

OUR MISSION

To serve and engage diverse audiences by advancing knowledge about Nigerian art and by offering exhibitions and educational programmes that enable them to learn about art and through art.



OUR PEOPLE

Supervisory Council

- Prince Yemisi Shyllon – Chairman
- Mrs. Yetunde Aina
- Dr. Mike Okolo
- Mrs. Nneka Okekearu
- Dr. Sola Oni
- Prof. Chantal Epie
- Mrs. Polly Alakija
- Mrs. Ifeyinwa Awagu
- Mrs. Nike Okundaye



Team

- Jess Castellote – Museum Director
- Michael Oseghale – Museum Manager
- Solomon Nkwagu – Visitor Services
- Jessica Nzenwata – Research and Documentation
- Chidera Ifechukwu – Advancement
- Aghogho Edemadide - Communications
- Lawrence Nweke - Collections

Advisory Board

- Mr. Kola Aina – Chairman
- Ms. Charlotte Ashamu
- Mr. Dotun Sulaiman
- Mrs. Ifeyinwa Ighodalo
- Mr. Jubril Enakele
- Mrs. Titi Akinsanmi
- Mr. Gbenga Oyebode
- Prof. Aderonke Adesanya
- Prof. Fabian Ajogwu
- Mr. Elo Umeh
- Mr. Vincent Egbe
- Mr. Jonah Adams
- Mr. Yiannakis Christoudolou
- Mr. Ken Ikpe
- Mr. Lere Awokoya
- Dr. Ola Ajayi
- Prof. Albert Alos
- Mr Gbenga Olaniyan
- Mr. Frank Momoh
- Mr. J.K Randle
- Mr. Folu Ayeni

Student Workers

- Christabel Eze-okoli
- Mary-Cynthia Ossai
- Boluwatife Falaki
- Phillip-Neri Okwuchukwu
- Daniel Olimma
- Chukwudi Ofoma
- Christabel Etok
- Ogochukwu Ifesemen
- Ebubechukwu Iloba
- Malaika Nnoruka
- Chinwendu Nweje
- Listowel Jones
- Anthony Enweugwu
- Vivienne Anyanwu
- Oluwadamilola Tedlance
- Ogechukwu Ata
- Grace Okwechime
- Konika Kamal
- Stephanie Chiedu
- Peter Agwu
- Mkpouto Inyang
- Isioma Elumah
- Oritsemeyiwa Kpiasi
- Mary Oigbochie
- Misan Atigbi
- Anthonio Maduadichie
- Judith Ojebuovboh
- Eme Duke
- Oghenevowero Tolunkari
- Samuel Ademeso
- Nicole Arnika
- Munachi Brian
- Kamtochukwu Ukachukwu
- Etse Aliu
- Munachiso Nzeribe
- Chika Nwogu-Agbakuru

THE **YSMA**

YEAR 2020 IN FIGURES

OPEN **24** WEEKS

972 TOTAL VISITORS

105 EVENTS

96 TOURS **8** CLASSES **1** MEETING

4788 WEBSITE VISITS

229 EMAIL SUBSCRIBERS

3473 SOCIAL MEDIA FOLLOWERS

31 PRESS MENTIONS

1035 WORKS

IN OUR COLLECTION

16 ACQUISITIONS

18 ADVISORY BOARD MEMBERS

6 FULL TIME STAFF

1 PART TIME STAFF

11 STUDENT TOUR GUIDES

10 STUDENT WORKERS

4 SPONSORS &
PARTNERS

2 RESEARCH GRANTS

1 AWARD

PROGRAMMES

PSN: Pre-colonial Societies in Nigeria

Artworks, besides allowing viewers to experience multiple forms of beauty, meaning and skill, can also be an excellent educational resource to help persons of all ages engage, discover and learn about the history and culture of Nigeria.

The “Precolonial Societies in Nigeria” programme is a one-day program designed for secondary school students with the aim of teaching history through art. The programme is museum-based and will use “object-based learning” methodologies. Artworks from Ife, Nok, Igbo-Ukwu and Benin currently on display at the Museum, will be used to engage participants about four significant historical events, periods and social systems that have shaped the cultural and societal heritage of Nigeria as we know it today. Learners will relive history in a different environment from the classroom and will discover how art can capture moments of life in time.

The programme involves a tour of the museum, with focus on artworks from the four selected cultures and societies, plus an interactive class on each of them. In addition to the activities of the programme at the museum, printed and digital resources will be freely accessible for the participants.

NAF/YSMA Doctoral Research Support Grants

Sponsored by the Nero Asibelua Foundation (NAF), the NAF/YSMA Doctoral Research Support Grants provides financial research support to deserving Doctoral candidates of Art History from Nigerian Universities. The annual grants programme welcomes applications from all around the country.

Agwu Enekwachi, whose dissertation topic is *The Yemisi Shyllon Art Collection in the Dynamics of Nigerian Art* and Primrose Ochuba, whose dissertation topic is *Textiles as medium and metaphor in the works of selected Nigerian contemporary artists*, both emerged as awardees.



L-R: Agwu Enekwachi and Primrose Ochuba

EXHIBITIONS

We created two exhibitions that ran throughout the year 2020. To improve the online experience of our audiences, the YSMA launched a virtual tour of its current *Making Matter* and *Mirroring Man* exhibitions, the former being sponsored by Iron Capital Limited. The virtual tour which was launched in November, 2020 on the YSMA website allows visitors to pace through the exhibition at their preferred speed and find resources on highlighted artworks from the exhibitions.



Making Matter

Exhibition on materiality and technology in Nigerian Art. Iheanyi Onwuegbucha

Ground floor, Yemisi Shyllon Museum of Art, Pan-Atlantic University.



Mirroring Man

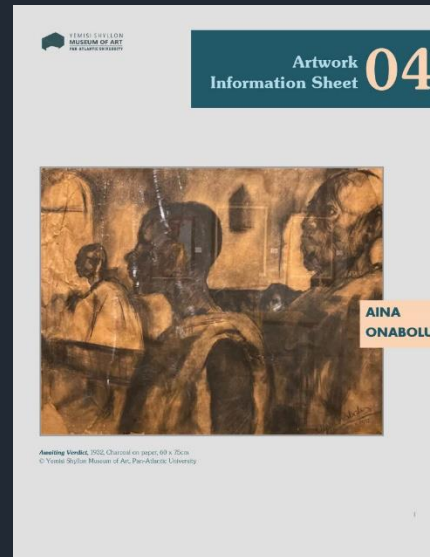
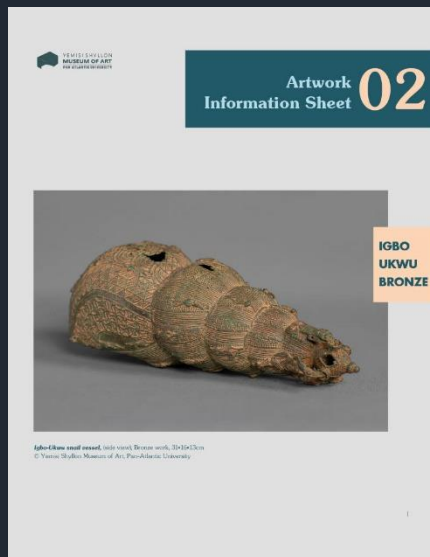
Exhibition on Art, Nigerian Society and Politics. Iheanyi Onwuegbucha

Top Floor, Yemisi Shyllon Museum of Art, Pan-Atlantic University

PUBLICATIONS

Artwork Information Sheets

The YSMA uploaded 10 Art Information Sheets during the year 2020 to provide more comprehensive information on artworks from the YSMA collection and make it suitable and accessible to a broad audience base. Our digital publications are available in pdf format on the [YSMA website](#).

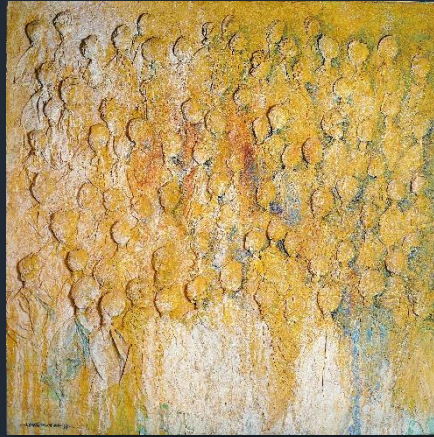


GIFTS AND LOANS

Notable Gifts



Collins Abinoro, *Bonded*, 2018

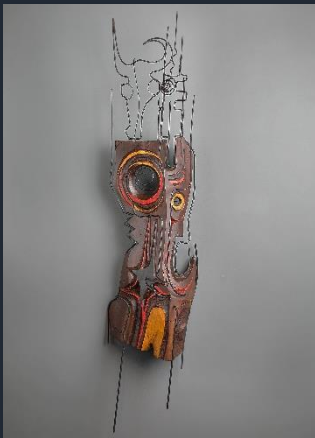


Uchay Joel Chima, *Human resources*, 2013



George Edozie, *Dike*, 2018

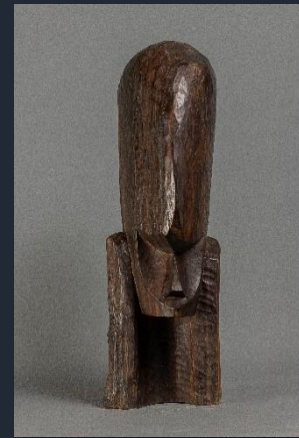
Notable Loans



Chris Afuba, *Pomo*, 1995



Ozioma Onuzulike, *Nkukere Aki (Armour for the Giant of Africa)*, 2018



Erabhor Emokpae, *Untitled*

STRATEGIC PLAN

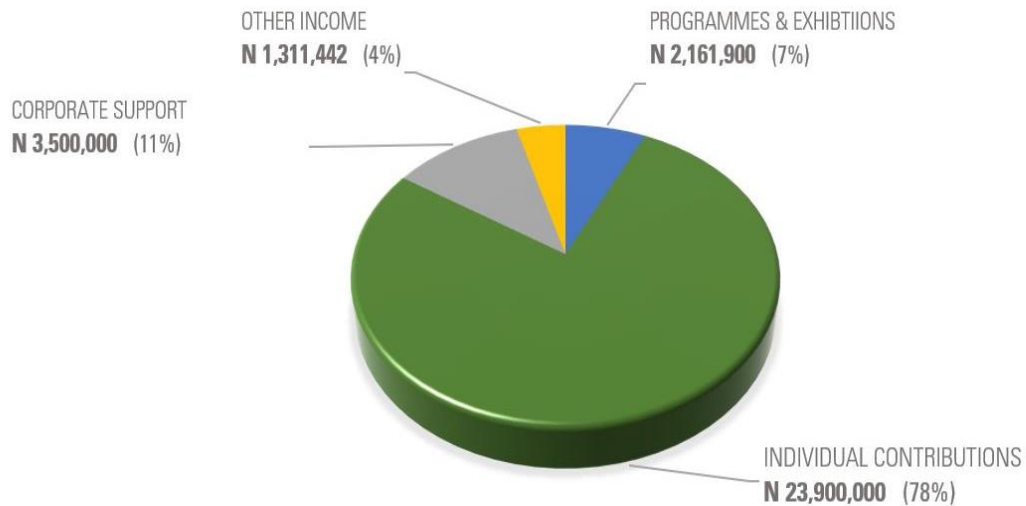
With the onset of the Pandemic, the challenging external environment has forced us to rethink and articulate what we are and what we want to be. The YSMA is a unit of the university. With this strategic plan, the YSMA aims not only at strengthening and deepening the impact of the museum, but also to be aligned and to support better the mission of Pan-Atlantic University to serve society. In the process of drafting this strategic plan, we have narrowed down the key strategic areas to four: Audiences, Collection, Sustainability and Relationships. The strategic plan outlines the six strategic goals that will guide the museum the museum in addressing issues in the key strategic areas. They are:

- Make the YSMA a relevant cultural hub for the Lagos community.
- Strengthen the Museum's presence in the digital space.
- Preserve, document, display and research the collection professionally.
- Inspire discovery, knowledge exchange and critical thinking.
- Ensure the long-term sustainability of the Museum.
- Broaden relationships.

FINANCIALS

2020 INCOME BY SOURCE

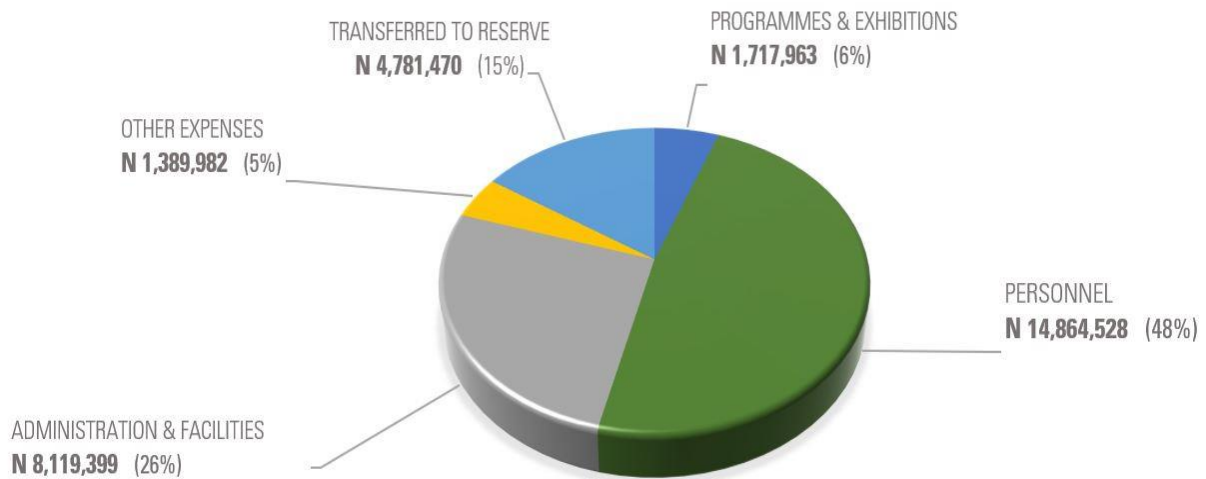
₦30,873,342



FINANCIALS (CONTINUED)

2020 EXPENDITURE BY TYPE

₦30,873,342



MEMBERSHIP

Our membership circle was launched in late 2020 to provide our audiences with opportunities for supporting our programmes and activities. YSMA membership qualifies our audiences for access to exclusive benefits at the individual, family, supporter, partner and patron levels. For more information about the membership programme please visit our [website](#).



Kolade Oshinowo, *Eyo Masquerades*, 2008, Mixed Media on Board 105X202cm. Gift from the artist

SPONSORSHIPS AND SUPPORT



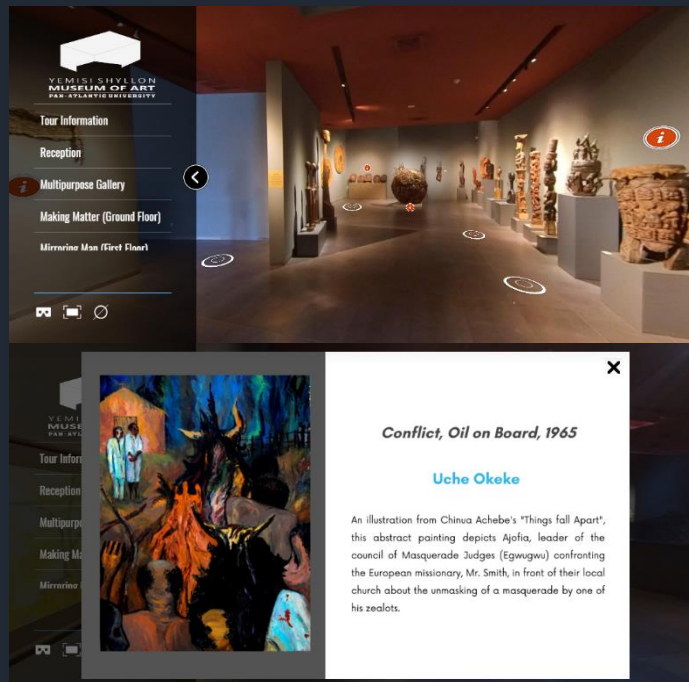
AWARDS

The YSMA were recipients of the 2020 Apollo Award for the Museum Opening of the Year. The Award was given by the Apollo Magazine, an international magazine that specializes in the world of Art on an international scale. This award is given to museums which opened recently and have since been in operation. The YSMA emerged as winners from a shortlist of 6 museums from across Europe and America.



VIRTUAL TOUR

Take a virtual tour of our current exhibitions. Experience our collection and access information on artworks on the go! Visit our [website](#) now to begin.



YSMA IN THE PRESS

Yemisi Shyllon Museum of Art wins award for 'Museum Opening of the Year'

The Yemisi Shyllon Museum of Art (YSMA) has been awarded the Museum Opening of the Year 2020 by the Apollo Magazine, an international publication that specializes in the world of art on an international scale. The award is presented to museums, which opened recently and have since been in operation. The other shortlisted museums are Abenobi Art Gallery (opened November 2019), The Box, Plymouth (opened September 2020), British Galleries, Metropolitan Museum of Art, New York (reopened March 2020), Gemäldegalerie Alte Meister und Skulpturensammlung bis 1800, Dresden (reopened February 2020) and KBR Museum, Brussels (opened September 2020).

The museum officially began operations in October 2019 and emerged winners from a shortlist of notable nominees. The award was presented to the YSMA by Apollo Magazine during an award ceremony held on November 18-19, 2020.

The museum opened with two exhibitions. The first, showing on the museum's ground floor, titled 'Making Matter', highlighted materiality and technology in Nigerian art. The second exhibition, 'Mirroring Man', explored society and politics as influences on Nigerian art and showed on the museum's top floor. Both exhibitions featured works donated to the

museum by Prince Shyllon, others coming from the university collection and from Nigerian collectors and artists.

According to Dr. Iles Castilho, the museum's director and designer, the architecture of the museum follows the principles that inspired the design of all the other buildings of the Pan-Atlantic University, fitness for purpose, flexibility, sustainability, and character. The flexible space allows the museum to change its display configuration according to changing curatorial demands. The excellent thermal insulation of the external walls and the efficient air circulation

throughout the single 'exhibition space' require a minimum air conditioning load.

The designers gave great attention to security, environmental control, efficient lighting, display quality, and ease of circulation. In addition, the retail shop, a clean cube of 30 x 30 x 11 meters, and the richly textured finish of the stained concrete walls give the museum building an iconic character that makes it stand out on the campus lawn.

Dr. Castilho further stated that being a university Museum, the YSMA is primarily an educational resource of the service not only of the Pan-Atlantic University, but also for the larger community. The museum will develop community educational programs for students of public schools, as well as training programs for art teachers, which would be made possible through corporate partnerships, donations and collaborations with artists.

The museum will adopt an audience centred approach to its curatorial and educational methods. Pan-Atlantic University offers a transformative educational experience and has the integral formation of the person and

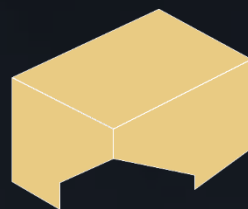


How a new museum in Lagos with art fit for a prince hopes to inspire and educate



HOW THIS CONTEMPORARY MUSEUM IS UPHOLDING NIGERIA'S HISTORY THROUGH ART





YEMISI SHYLLON
MUSEUM OF ART
PAN-ATLANTIC UNIVERSITY

www.museum.pau.edu.ng

The information presented here, correct at the time of publication, is subject to change.